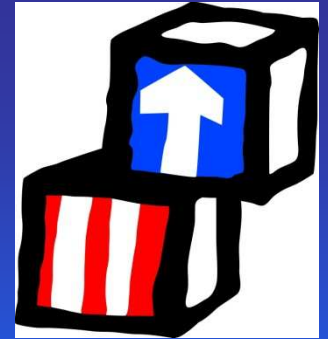




Wayne Metropolitan  
Community Action Agency



# An Overview of Wayne Metro Head Start

*“Wayne Metro Head Start  
is a Family Affair!”*

# About Wayne Metro Head Start

- Serves 481 Families
- Serves families residing in Highland Park, Hamtramck, Harper Woods and all of the Grosse Pointes



# About Wayne Metro Head Start

- 3 Head Start Centers
  - Highland Park - Cortland Elementary
  - Hamtramck - Wayne Metro Early Childhood Center
  - Harper Woods - Kelly Road
- Full and Part-Day Classes Available
- Focus on school readiness
  - Follow State of Michigan Guidelines for Kindergarten.
  - Partner with all local school districts.



# Site Breakdown

Hamtramck 278

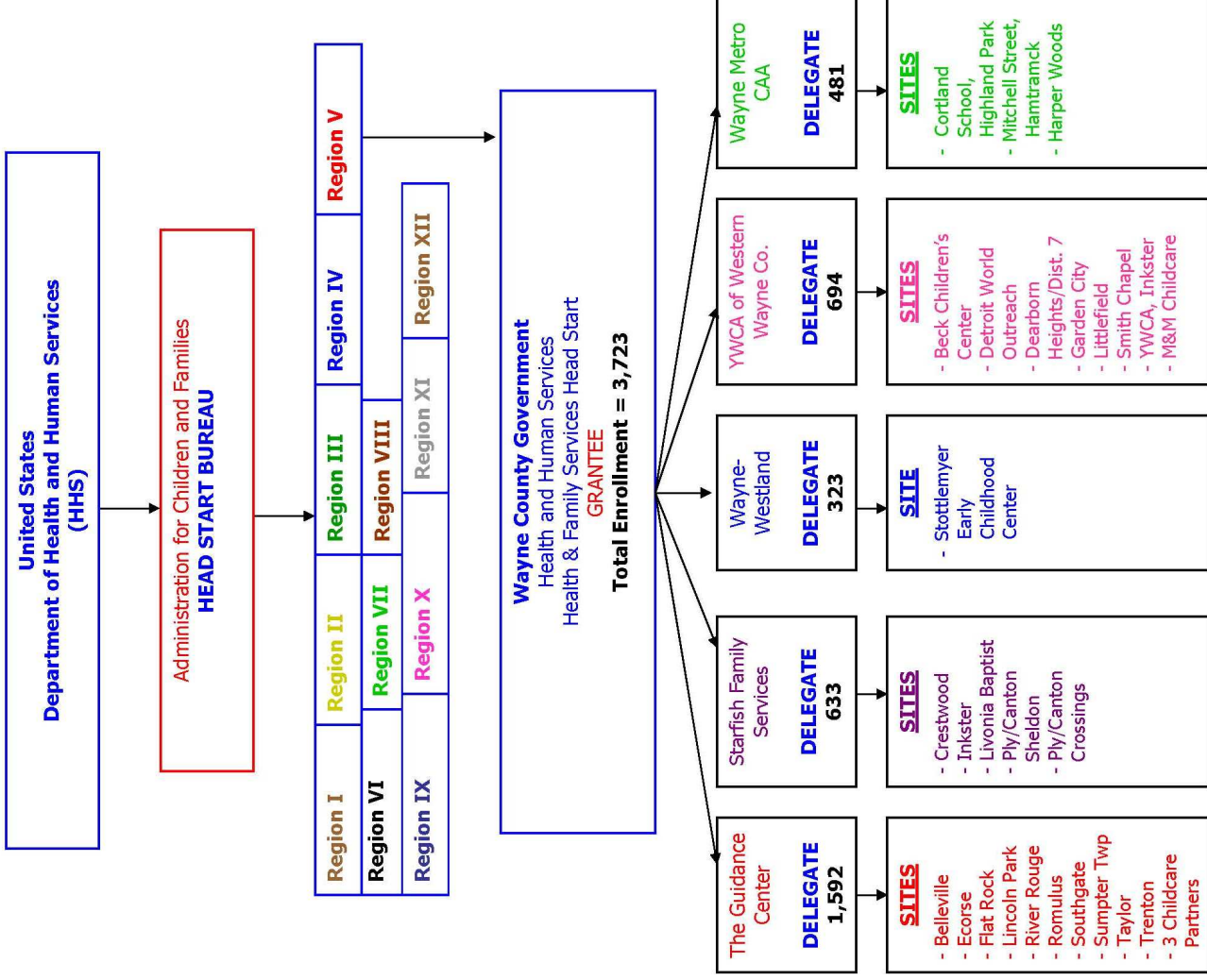
Highland Park 129

Harper Woods 54

Grosse Pointe 20

481 Total Funded Enrollment

## Wayne County Head Start



# Head Start Teacher Qualifications

In Compliance with the Federal Head Start Reauthorization of 2007, at a minimum:

- All **Teachers** must have a Bachelors in Early Childhood Development
- All **Teacher Assistants** must have an Associates Degree in Child Development
  - Includes all substitute positions





# Disability & Mental Health Services

- At least 10% of Head Start enrollment is reserved for children with disabilities.



# Fatherhood Initiative

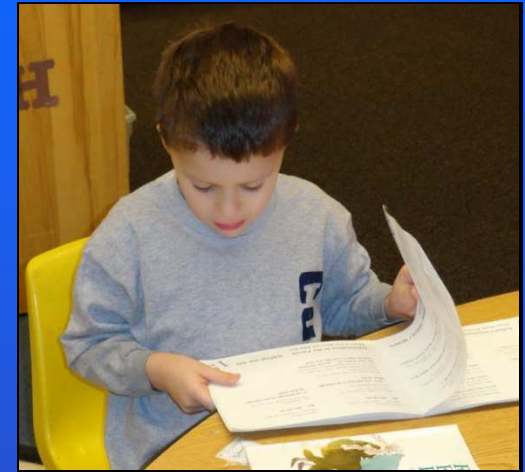
- Wayne Metro Head Start focuses on involving fathers in their child's learning.
- Fatherhood events are held throughout the year.
- Over 50 Fatherhood events held in 2010-2011.





# Family Literacy Events

- Nine Reading is Fundamental (RIF) events held throughout the year (3 at each site).
- My Brother's Keeper - Mentoring and Literacy Program from youth ages 11-18 and are siblings of a Head Start student.



# Health & Development

- All Head Start students receive:
  - Social and Emotional Development Screening
  - Dental Screenings through Mobile Dentist
- Adult Screenings for Blood Pressure & Cholesterol at Family Events.
- Nutritious breakfasts, lunches and snacks are provided.
- Healthy Cooking Classes offered for parents.



# Leadership Opportunities

- Parents are encouraged to take leadership roles in the program.
- Parents can volunteer for Policy and Parent Committees or Policy Council.
- Help parents develop leadership, team building and employment skills.

# Volunteer Application Process

- Wayne Metro Head Start relies on volunteer support!
- Application is Part of the Enrollment Process.
- All Parents receive Code of Conduct, Criminal Background Check and DHS Check.
- Volunteers are required to participate in Head Start Orientation and Training.
- Same Process for Community Volunteers.



# Community Collaborations

- Head Start Clothing Closet
  - Includes Business Attire for Adults.
  - Open to 3 Fire Departments and other Community Organizations.
- Many other Community Partnerships



# 360 Degree Program Monitoring

- Introduced in 2011 and includes:
  - On-Site reviews every 3 years
  - Extensive monthly reporting processes to the Regional Office by the grantee
  - Quarterly conference calls regarding classroom activities, CLASS and School Readiness practices
  - Potential unannounced visits by the Regional Program Specialist
  - Regular additional requests for information as defined by OHS
  - PIR Information Reports
  - Grant Application Analysis
  - Performance and Risk Assessment System

# School Readiness

- Follows State of Michigan Guidelines for School Readiness
- Work with local school districts to streamline kids in to meet the goals of the districts.



# Head Start Curriculum

- **High Scope** — a tool for meeting the standards of quality that matter to you and your program. The High Scope Curriculum's learning content and its child and program assessment instruments are highly compatible with various state and local early childhood standards.

# Child Progress Assessments

- The Child Observation Record (COR) focuses on broad cognitive, social-emotional, and physical abilities
- COR observations help teachers and administrators determine how best to strengthen the program to meet each child's developmental needs, as well as those of the group as a whole.

# Questions?

Become a fan on facebook!



[www.facebook.com/wmheadstart](http://www.facebook.com/wmheadstart)